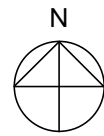


— Site area:
 1.30ha/3.22 acres



/ Initial issue 18/11/14
 The copyright of this drawing is held by Eden Building Design, and no reproduction is allowed without prior permission.

<p> <small>project</small> Proposed Housing Scheme at New Hall Lane Phase 3, Preston for Mulbury Homes <small>title</small> Location Plan </p>	<p> <small>status</small> Planning <small>scale</small> 1:1250 at A4 <small>drawing no.</small> 14-159-P01 </p>	<p> <small>date</small> 18/11/14 <small>drawn by</small> CJB <small>checked by</small> APS </p>		<p> <small>Eden Building Design</small> <small>Great Oak Farm</small> <small>Mag Lane</small> <small>Lymm</small> <small>Cheshire</small> <small>WA13 0TF</small> <small>Tel: 01925 748531</small> <small>Email: info@edenbuildingdesign.co.uk</small> <small>Web: www.edenbuildingdesign.co.uk</small> </p>
---	---	---	--	---